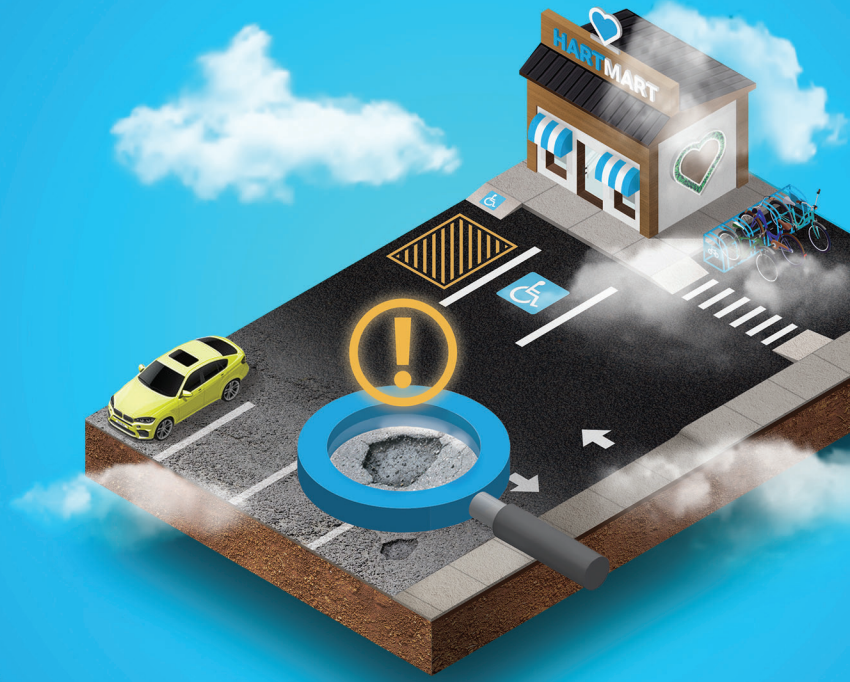




Pavement Preparation



360M+ SF
Maintained
Pavement

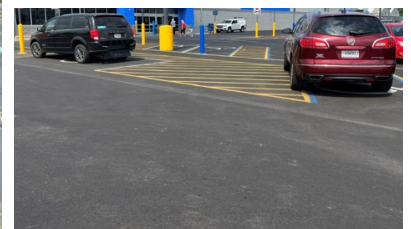


49 States

1200+
Projects

Evaluate Your Pavement Now for Spring Construction

As winter approaches, ensuring your pavement is in top condition is crucial. CESO's inspection team can help identify and address potential issues before they become costly problems. Winter weather can be harsh on pavement, intensifying existing issues and leading to significant damage if not properly maintained. By scheduling an inspection now, proactive steps can be taken to evaluate your pavement, ensure ADA compliance, design necessary remedies, bid, award, and construct come Spring to protect your investment and ensure safety.



Why Evaluate Your Pavement Program?

Assessing your pavement needs offers clear benefits, including extending pavement lifespan, reducing repair costs, and promoting safety. Routine assessments help identify issues early, allowing for proactive maintenance that can extend pavement life by up to 20 years and prevent more significant, costly repairs. According to the National Center for Pavement Preservation, every dollar spent on preventive maintenance can save between \$6 and \$10 in repair costs, making it a highly cost-effective approach. A well-structured maintenance program strengthens pavement durability and reduces unexpected disruptions, demonstrating a commitment to high standards and user safety.



Preventative Maintenance

- Identify and repair damage early: winter weather can turn minor cracks into major potholes.
- Extend pavement lifespan: regular inspections and maintenance can significantly extend the life of your pavement.



Safety Improvements

- Reduce accident risks: well-maintained pavements reduce the risk of accidents caused by potholes and uneven surfaces.
- ADA parking and access are critical to your business operations.
- Enhanced visibility and traction: proper maintenance ensures better visibility and traction, while improving customer experience.



Cost Savings

- Avoid expensive repairs: addressing small issues before they worsen can save you from costly emergency repairs.
- Optimize budget: scheduled maintenance allows for better planning and allocation, avoiding unexpected expenses.



Environmental Benefits

- Reduced salt usage: well-maintained pavements require less de-icing salt, which is better for the environment and reduces maintenance costs.
- Improved water quality: proper drainage and maintenance prevent water ponding and reduce the risk of water contamination.

Mike Giuliani

Senior Program Director
614.537.7741
mike.giuliani@cesoinc.com

Russell Knipp

Project Manager
937.396.9907
knipp@cesoinc.com

Raybon T. Shannon Jr.

Project Manager
330.431.6716
shannon@cesoinc.com

To learn more about our comprehensive suite of site and building services, visit cesoinc.com.

